



## CONTACT INFORMATION

### QUANG BINH PROVINCIAL DEPARTMENT OF PLANNING AND INVESTMENT

- +84.2323840029 / +84.2323821520
- +84.2323821520
- 23/8 street, Dong Phu ward, Dong Hoi city, Quang Binh province
- <https://skhdt.quangbinh.gov.vn/>
- [cip.quangbinh@gmail.com](mailto:cip.quangbinh@gmail.com)

### QUANG BINH PROVINCIAL MANAGEMENT BOARD OF ECONOMIC ZONES

- +84.2323828513
- +84.2323828516
- No.117 Ly Thuong Kiet street, Dong Hoi city, Quang Binh province
- <https://bqlkkt.quangbinh.gov.vn>
- [kkt@quangbinh.gov.vn](mailto:kkt@quangbinh.gov.vn)

# QUANG BINH PROVINCE

## GETTING CLOSER TO INVESTORS

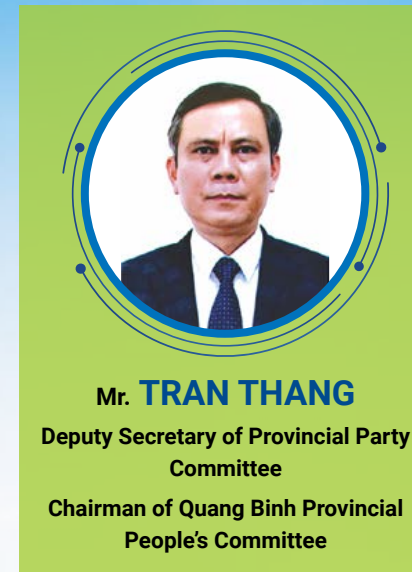
QUÉT MÃ ĐỂ TẢI VỀ  
Scan here to download





# TABLE OF CONTENTS

- 03** QUANG BINH WELCOMES ALL INVESTORS
- 04** SOME INFORMATION OF NATURAL, SOCIO-ECONOMIC CONDITIONS
- 06** DEVELOPMENT POTENTIALS AND ADVANTAGES
  - 06** 1. Geo-economic advantages
  - 09** 2. The leading tourist destination of Vietnam
  - 13** 3. Diversified system of economic zones, industrial parks, industrial clusters
  - 17** 4. Agricultural development adapted to climate changes
  - 18** 5. Qualified and skilled labor forces
  - 19** 6. Favorable and safe business investment environment
- 20** DEVELOPMENT GOALS AND PRIORITIES
- 24** INVESTMENT ATTRACTION ORIENTATION
- 31** COMMITMENTS OF PROVINCIAL LEADERS AND AUTHORITY



*Dear Investors!*

First of all, I would like to send all investors, all the distinguished delegates sincere greetings and wishes for good health, happiness, success and prosperous development.

Located in the strategic position on economic development corridors in the North Central of Vietnam, Quang Binh is the destination of safety, uniqueness and distinction. With the natural area of about 8,000 km<sup>2</sup>, 116km-long coastline, forest coverage of above 68% (ranked the 2<sup>nd</sup> nationwide), such natural conditions and geographical location have enabled Quang Binh province to have a favorable space to develop.

Quang Binh has the synchronous traffic system including Dong Hoi airport, Hon La seaport, 1A National Road, the East and West branches of Ho Chi Minh Road, 12A National Road, North-South Railway and Dong Hoi Railway Station as the main railway station together with the North – South expressway under urgent construction, which is very convenient for traveling, commodity trade exchanges within the areas and regions nationwide.

02 economic zones and 10 industrial parks within the province are located in favorable geographical position, adapting

# QUANG BINH

**WARMLY WELCOMES ALL INVESTORS!**

to competitive and cooperative environment, out of which Hon La economic zone and Cha Lo international border gate economic zone have been assessed to be the top potentials for developing industry, logistics, renewable energy, commercial services trading spreading throughout the whole neighboring area.

Particularly, Quang Binh possesses Phong Nha - Ke Bang National Park, which has been twice recognized by UNESCO as the World Natural Heritage, named as “the kingdom of caves” with thousands of large and small caves, the most outstanding of which is Son Doong - the largest cave in the world. In addition, Quang Binh also possesses world class golf courses and many clean, beautiful beaches such as: Nhat Le, Bao Ninh, Da Nhay...with many delicious specialties to make the food culture more diversified. All of these features have contributed to create the serial activities of attractive, distinctive coastal sport and resort tourism. There is also Bang hot spring with natural boiling temperature at 105°C to be invested to become the Japanese Onsen - modelled ecological and rehabilitation tourism center that is suitable for rehabilitation and healing tourism. In addition, there are also many spiritual and cultural heritages, historic relics such as legendary Truong Son road, Eight Ladies Cave... It can be affirmed that Quang Binh has possessed sufficient conditions to develop into a big tourism center of Vietnam and the Southeast Asia.

Quang Binh provincial master plan within the period of 2021 – 2030, vision by 2050 approved by the Prime Minister has clearly stated that the provincial socio-economic development orientation in the coming time is to fully exploit the provincial potentials and advantages, guarantee fast and sustainable economic growth rate; by the year 2030, it will be targeted to become the fairly developing province of the Central region and by the year 2050, it will become a dynamic economy of the Central region as well as the nation.

With the message “*Quang Binh province getting closer to investors*”, the Quang Binh homeland is welcoming investors, welcoming all of you to experience distinctive tourism products, seek out the investment cooperation opportunities and develop the business ideas based on the local available potentials and advantages.

We are looking forward to the cooperation for mutual development!

*Best regards!*

# SOME INFORMATION OF NATURAL, SOCIO-ECONOMIC CONDITIONS



08 administrative units including

- Dong Hoi City
- Ba Don Town
- Le Thuy District
- Quang Ninh district
- Bo Trach district
- Quang Trach district
- Tuyen Hoa district
- Minh Hoa district



Forest coverage rate of

above **68 %**

(ranked the 2<sup>nd</sup> nationwide)



Total land area covered with forest of

above **590,000 ha**



The coastline of more than **116 km**

with many beautiful beaches, exclusive economic zone and large continental shelf, favorable for sustainable marine economic development.



Total natural area

about **8,000 km<sup>2</sup>**



Population

> **910,000 people**



Quang Binh is named as **"THE KINGDOM OF CAVES"**



Phong Nha - Ke Bang National Park has been twice honored by UNESCO as the World Natural Heritage for the geological values, biodiversity, terrestrial ecosystems development



Son Doong cave is recognized by Guinness World Records as the largest cave of the world; among 20 record-breaking natural wonders (Insider, 2019 and 2020)



At the location of **Bang hot mineral spring** with boiling temperature of **105°C**, a Japanese onsen-modelled rehabilitation and resort tourism center is preparing to be put into operation



The world-class coastal golf course system is being on implementation process

**02** 18-hole golf courses being on operation, 01 golf course being on construction



**Dong Hoi airport** is one of the airports with fast growth rate in term of annual number of passengers carried



There is a central hospital (Vietnam - Cuba Friendship hospital) and the modern private healthcare system (Viet An eye hospital, TTH Quang Binh General Hospital .....

# DEVELOPMENT POTENTIALS AND ADVANTAGES

1

## GEO-ECONOMIC ADVANTAGES

Quang Binh is located in the North Central of Vietnam

500km away from Ha Noi  
In the North

Bordered by Laos  
(with more than  
222 km long borderline)  
In the West



Bordered by the East Sea  
(with more than  
116 km long coastline)  
In the East

1,200km away from Ho Chi Minh city  
In the South

- Cha Lo international border gate
- Hon La seaport
- Dong Hoi airport
- North-south railway

- North-South 1A National Road; 12A National Road connecting the East and the West
- Ho Chi Minh road (the East and the West branches)
- North-South expressway (completed by 2025)



Quang Binh is located on the East West Economic Corridor, that is the shortest way for trading activities from Vietnam to Laos, Northeast of Thailand and Myanmar.


Therefore, Quang Binh province is very favorable in travelling, exchanging and transporting commodities.








**Synchronous traffic infrastructure system including airway, road, railway and waterway; territorial closed planning with sustainable development orientation**


- Favorable road traffic system: 1A National road, Ho Chi Minh road – East and West branches, coastal road, North-South railway, North-South expressway (completed by 2025)...
- Dong Hoi airport: it is expected to reach capacity of 3 million visitors/year and 50,000 to 100,000 tons commodities/year by the year 2030.
- Hon La port area (belonging to Hon La economic zone) serves Hon La economic zone, Cha Lo border gate economic zone and other industrial parks of Quang Binh province combined with commodity transshipment to Laos, Northeast of Thailand; capable of receiving: general cargo ships; container, liquid/gas cargo up to 50,000 tons; bulk carriers up to 70,000-100,000 tons or larger if having sufficient conditions; international cruises ship of 225,000 GT.
- Mui Doc port area (belonging to Hon La economic zone) is planned to receive vessels up to 100,000 tons, liquid/gas cargo up to 150,000 tons.
- Cargo capacity of Hon La port by 2025 will reach about 10.58 million tons/year and 18.08 million tons/year by 2030
- Cha Lo international border gate (belonging to Cha Lo border gate economic zone) is the border gate with the highest import export turnover among border gates between Vietnam and Laos
- Ca Roong sub-border gate is being upgraded and completed


 Telecommunication and fiber optic cable network cover the whole province.

 Provincial e-governmental infrastructure is synchronous, consistent, nationally connected, ready for digital transformation process (the project of digital transformation, e-government and smart city within the period of 2021-2025 has been approved with total invested capital of 210 billion dong).

 Synchronous **220KV** and **110kV** national electric grid system

 Water supply system with capacity of **45,000 - 50,000m<sup>3</sup>/day**; sufficient conditions to increase the capacity 2 times.

 The system of **17** banking branches can fully meet transaction demand

 The system of hotels, restaurants, supermarkets, department stores is very diversified and plentiful

**2**

**THE LEADING TOURIST ATTRACTION OF VIETNAM**



**The New York Times**

Quang Binh is the most attractive destination of the Asia

**Booking.com**

Phong Nha and Dong Hoi are the **02** out of **10** friendliest destinations in Vietnam

**lonely planet**

Phong Nha - Ke Bang is one of the most worth experiencing destinations in Vietnam



**THE WORLD NATURAL HERITAGE - PHONG NHA KE BANG NATIONAL PARK**



Being one of the two provincial centers of growth drivers by 2030

Area: **123,326 ha** (belonging to the following districts: Bo Trach, Minh Hoa Quang Ninh); twice honored by UNESCO as the world natural heritage with geological and geomorphological criteria in 2003 and bio-diversity and ecological criteria in 2015.

The estimated thousands of large and small caves formed millions years ago (only 400 caves measured and surveyed) have created the distinctive discovery and adventure tourism products system

**SON DOONG CAVE** (announced in 2009) holds the record for the largest cave in the world (Guinness World Record) with about 9km in length, 150m in width and 200m in height

**EN CAVE** is the third largest in the world with the length of about 2km; the largest and most famous cave entrance possesses the height of 120 m and the width of 140m.

Caves with the top distinctive and outstanding values within the region and the world are as follows: Phong Nha - Tien Son cave, Paradise cave, the system of Tu Lan - Tien caves, Va cave - Nuoc Nut cave ....



**“QUANG BINH** has been becoming the leading adventure tourism center and experience discovery paradise of the Asia with the spectacular cave system together with diversified ecosystem and plentiful cultural values; it also becomes Vietnamese top class recreational sports and resort destination connected with community benefits and sustainable tourism development”

### ADVENTURE TOURISM - EXPERIENCE AND DISCOVERY



**“Conquering Son Doong - the largest cave of the world”** - one of the leading worth experiencing tourism products of the world; cave discovery and exploration tourism products: En cave, Tu Lan - Tien cave system, Va cave- Nuoc Nut cave, Dai A cave - Over-Pigmy... with different time and levels of adventure, meeting plentiful demands of domestic and foreign tourists.

**Cave visit tourism products:** Paradise cave, Phong Nha cave, O Ro cave - Hoan My cave, Hamada valley, Tra Ang cave... have attracted many tourists.

**The rivers and streams system, attractive natural landscapes** in Mooc spring, Chay river - Dark cave, flora garden, Ozo park with the activities of Zipline, Kayaking, mud bathing, mountain climbing... have arisen the experience passion of tourists.

**Potential locations:** Khe Da (Dong Hoi), Dong Chau - Khe Nuoc Trong natural reserve area (Le Thuy), the system of Long Dai river, Tam Lu waterfall, Cha Rao - Cha Cung (Quang Ninh), Tam Cap waterfall (Quang Trach)... are the promising places to form many attractive and distinctive tourism products and centers in the coming time.

### RESORT TOURISM - RECREATIONAL SPORTS



World class coastal golf courses system

**02** 18-hole golf courses being in operation  
(among the 100 most beautiful golf courses in Asia - Pacific)

**01** modern golf course being under construction

Some other golf courses being interested and investment procedures implemented by investors.



### BEACH RESORT

the long coastline with many beautiful beaches with many retained wild features such as Da Nhay, Nhat Le - Quang Phu, Bao Ninh, Hai Ninh, Ngu Thuy, Quang Tho... Technical infrastructure and tourism services facilities have fundamentally completed and gradually upgraded with 531 accommodations with 8,475 rooms, 3,000 restaurants and tourism products supply centers, 70% of which are coastal; many 4-star resorts, hotels are being on the process of gradual completion...



### REHABILITATION TOURISM

Bang hot mineral spring (Le Thuy) with boiling temperature of 105°C; Japanese Onsen - modelled rehabilitation and ecological tourism center; Ngu Hoa hot spring; cave mud bath...



## CULTURAL AND HISTORICAL TOURISM



Historic relics on the legendary Ho Chi Minh road system, Eight Ladies cave, Marquis Nguyen Huu Canh temple, Vung Chua-Dao Yen, Quang Binh gate, Mother Goddess Lieu Hanh temple, Hoang Phuc pagoda (history of 700 years)... Ho Chi Minh square, General Vo Nguyen Giap Memorial House and Tomb...



Annually, there are tens of festivals, out of which there are some typical festivals such as: Cau Ngu festival; boat racing festival on Kien Giang river, Le Thuy district; Drum-breaking festival of Ma-Coong people in Thuong Trach commune, Bo Trach district; new rice celebration festival of Bru-Van Kieu ethnic group in Quang Ninh district; boat racing festival on Nhat Le and other intangible cultural values...

## RURAL TOURISM, COMMUNITY-BASED TOURISM



Cu Nam tourism cultural village, Canh Duong tourism cultural village, Len Chua tourism center, Suoi Da tourism center, community-based tourism spots in Phong Nha, Hung Trach, Phuc Trach (Bo Trach)...

## OTHER TOURISM PRODUCTS

Food tourism, MICE tourism, festival tourism...

Tourism trading infrastructure has been under modernized and synchronous investment; projects of resorts, hotels, recreation and entertainment combination cluster are under investment process; many world's leading hotel brands are under investment and franchising within the provincial area such as Dolce, Wyndham, Movenpick, Novotel, Pullman, Melia, Grand Mecure, Fusion... Golf course system has been constructed to serve the market of leisure travel, luxury accommodation segment and other segments.

3

## DIVERSIFIED SYSTEM OF ECONOMIC ZONES, INDUSTRIAL PARKS, INDUSTRIAL CLUSTERS



(with the area of more than **66,000** ha)



which will be the promising place for investors to set up the safe and effective producing and processing factories

## HON LA ECONOMIC ZONE (IN QUANG TRACH DISTRICT)



- Being one of the two provincial centers of growth drivers by the year 2030
- It is planned with the total natural area of **10,000** ha, oriented to develop into the general economic zone, with the development focus on electric industry, supporting industry, commodity transshipment port combined with cruise ship services; acting as the leading point in investment attraction and as the growth drivers for other regions, especially closely connecting with Vung Ang economic zone as per South Ha Tinh - North Quang Binh master plan.

It includes the following main functional zones (as per general master plan orientation by 2040)

### NON-TARIFF ZONE:

servicing the exported goods production and on-the-spot demands (including processing, recycling, sorting, packing, transporting, delivering, receiving goods in transit, warehouse preserving...) and other commercial service activities. Non-tariff zone trading will be combined with effective investment and exploitation of Hon La seaport, together with 1A, 12A National Roads, Cha Lo international border gate, Treo bridge, Lao Bao creating the important gateway through the East Sea within Southern Laos, Northeast Thailand and Mekong river sub-region.

### PORT AND PORT LOGISTICS:

including Hon La port area, Mui Doc port area, newly established general riverway port in the South of Roon river of Quang Tung commune, expanded fishing port in Canh Duong commune; expanded storm shelter in Quang Phu commune combined with boats and ships building and repairing; supplemented storm shelters for fishermen in Quang Dong commune; arranged tourism boat docks at the water surface area in the following communes: Quang Dong, Quang Phu, Canh Duong, Quang Xuan and Dao Yen.

### INDUSTRIAL PARKS AND CLUSTERS:

(including Quang Trach energy and electricity complex): possessing total area of about 1,500ha to be on the process of detailed planning and infrastructure construction of 3 industrial parks within Hon La economic zone.

### URBAN CENTER, RESIDENTIAL AND RESETTLEMENT AREAS:

land master plan for construction of urban center, residential area of Hon La economic zone including development of new residential area, resettlement area, rural residential point.

### RURAL RESIDENTIAL AREA, URBANIZATION AND OTHER SUB-DIVISIONS:

(tourism, cultural, historic relics...)



## CHA LO BORDER GATE ECONOMIC ZONE (LOCATED IN MINH HOA DISTRICT)



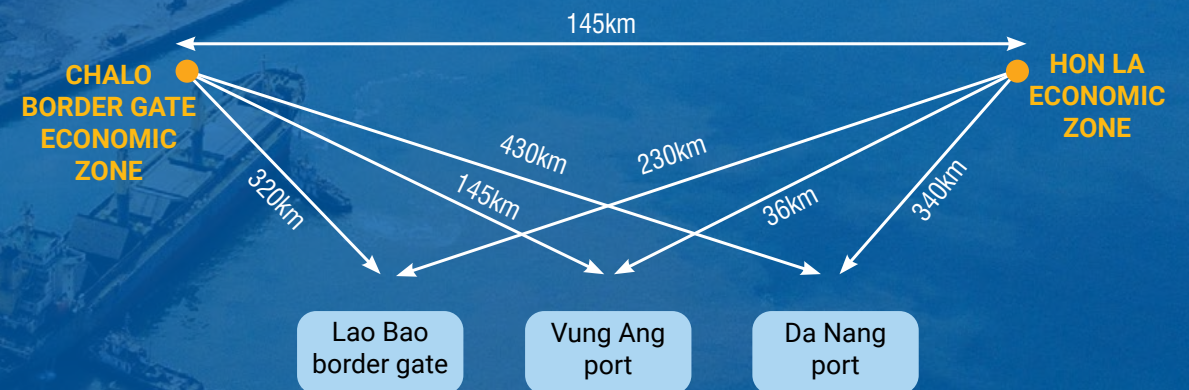
Total natural area  
**53,923** ha

Its development orientation is to become the western economic and urban center of Quang Binh province, acting as the transshipment point, the provincial goods and services import export center to Laos and Thailand; being the region with important significance of security and national defence.

Chalo international border gate is one of the biggest border gates between Vietnam and Laos with total import export, transit, non-commercial turnover values in the year 2022 reaching nearly **2** billion USD.



Its location is **03-05** hour by road away from the main import export ports of the central region



## INFORMATION OF INDUSTRIAL PARKS IN QUANG BINH

| No. | Industrial park (IP)         | Location  | Area of master plan (ha) | Total enterprises in operation | The vacant area to be leased by the current time (ha) | Information of existing technical infrastructure  |
|-----|------------------------------|---|--------------------------|--------------------------------|---|---|
| 1   | Northwest Dong Hoi IP        | Dong Hoi city   | 80.98                    | 22                             | 0   | Fundamentally completed technical infrastructure  |
| 2   | North Dong Hoi IP            |   | 135.68                   | 30                             | 3   | Fundamentally completed technical infrastructure  |
|     | North Dong Hoi IP (expanded) |   | 45.6                     | 7                              | 14  | Detailed master plan approved; technical infrastructure being on construction   |
| 3   | Hon La sea-port IP           | Belonging to Hon La economic zone, Quang Trach district | 97.58                    | 31                             | 0   | Fundamentally completed technical infrastructure  |
|     | Expanded Hon La sea-port IP  |   | 67.9                     | 1                              | 46.86   | Detailed master plan approved; technical infrastructure being on construction   |
| 4   | Hon La II IP                 |   | 177.1                    | 6                              | 92.72   | Detailed master plan approved. technical infrastructure being on construction   |
| 5   | Western gateway IP           |   | 122                      | 2                              | 100.15  | Detailed master plan approved. Being on the process to call for technical infrastructure development investment   |
| 6   | North West Quan Hau IP       | Quang Ninh district                                     | 314.32                   | 9                              | 212.46  | Detailed master plan approved. technical infrastructure being on construction.  |
| 7   | Cam Lien IP                  |   | 477.6                    | 12                             | 280.64  | Detailed master plan approved. Proposed by Capella for infrastructure construction and trading  |
| 8   | Bang IP                      | Le Thuy district  | 135                      | 2                              | 89.63   | Detailed master plan phase 1 (135 ha) approved; being on the establishment of detailed master plan to expand to 250ha; Being on the process to call for technical infrastructure development investment |
| 9   | Bo Trach IP                  | Bo Trach district                                       | 224                      | -                              | -   | No existing detailed master plan; Being on the process to call for technical infrastructure development investment  |
| 10  | Quang Trach IP               | Quang Trach district                                    | 200                      | -                              | -   | No existing detailed master plan; Being on the process to call for technical infrastructure development investment  |

## 4

## AGRICULTURAL DEVELOPMENT ADAPTED TO CLIMATE CHANGES

Quang Binh province has been focusing on agricultural development adapted to climate changes as well as reaching the highest added values thanks to scientific and technological advances in agriculture, high-tech aquaculture as per the standards of VietGAP, Global GAP... with import orientation



There are about **120,700** ha plantation forests provincewide (timber exploitation output of about 0.5-0.7 million tons/year). By the year 2030, land use for forestry and agricultural purpose accounts for more than 715,000 ha, 84% of which are used for forestry purpose. This will be a very big potential for forest development, material forest plantation for exported plantation timber processing and producing industry.



The province possesses above **116** km long coastline with the large continental shelf, that is the convergence of many types of seafood with highly economic value such as lobsters, black tiger shrimps, squid, cuttlefish, coral... Along the coastline, there are 5 main estuaries that is favorable for aquacultural development. Annual aquacultural output reaches about 100,000 tons. Therefore, Quang Binh province is the ideal place to develop aquaculture as well as high quality seafood exploiting and processing for export.



The provincial animal husbandry sector has developed in terms of quantity, quality and value; animal husbandry density in agricultural production value accounts for about 53%; the live weight meat production output is about **80,000** tons/year; this will be the advantage to build up the key breeding zone as well as the focused poultry and livestock processing factories.

# 5

## SKILLED AND QUALIFIED LABOR FORCES



Labors in the working age account for nearly **50%** total population (about 435,000 people)



Young population structure



Annual number of new labors: **18,000-19,000** labors



The rate of trained and re-trained labors accounts for nearly **68%**, out of which the rate of trained labors with diplomas and certificates reaches above **28%**

### THE SCHOOL SYSTEM



**1** university with training scale of 2,500 students/year



**16** vocational education centers including:

- 04 colleges,
- 03 intermediate schools
- 09 vocational - education centers

# 6

## SAFE, FAVORABLE BUSINESS AND INVESTMENT ENVIRONMENT

Creating breakthroughs from administrative procedures reforms, business and investment environment improvement, opening up the opportunities to promote strong development of enterprises, investors are the essential tasks in the provincial investment attraction.



- Quang Binh province is the 9<sup>th</sup> province nationwide with the provincial master plan within 2021-2030, vision by 2050 approved by the Prime Minister; the system of urban master plan, rural master plan, district master plan, district land use master plan, functional region master plan...has been approved and regularly updated and amended as the foundation for investment attraction.
- E-government is applied in the procedures of business registration, customs, and tax to guarantee the quick, accurate and effective procedure implementation.
- The investors and enterprises' petitions receiving group has been established to timely solve all difficulties, problems for enterprises and investors.
- The Public Administrative Center quickly resolves administrative procedures under the OSS (One-Stop-Shop) mechanism.
- The Urban Intelligent Operations Center (IOC), which has been established and come into operation, helps to accelerate the application of artificial intelligence (AI) in monitoring implementation progress of administrative procedures and synthesize reflections of people, enterprise within the province via mobile applications.
- Regularly organize the meetings with investors/enterprises to discuss, grasp and handle requirements, difficulties, problems as well as promote project implementation progress.
- Regarding investment incentive and support policies: apply the highest incentive level within the governmental incentive frame; apply the provincial private incentive and support policies for the key projects and other projects in the fields of investment encouragement.

# DEVELOPMENT GOALS AND PRIORITIES

## IN QUANG BINH PROVINCIAL MASTER PLAN WITHIN THE PERIOD OF 2021-2030, VISION BY 2050

(Pursuant to Decision No.377/QĐ-TTg dated April 12<sup>th</sup>, 2023 by Prime Minister)



### DEVELOPMENT GOALS BY

# 2030

Guarantee the quick and sustainable economic growth based on effectively promoting potentials, advantages, making use of scientific and technological achievements, innovation and creativity; develop Quang Binh into a dynamic economy with the focus on outstanding services and tourism sectors, clean industry, renewable energy, processing and manufacturing industry, ecological, responsible, sustainable high-tech agriculture; focus on investment in modernly and synchronously social and technical infrastructure system; innovate management and leadership methods; accelerate administrative reforms; strengthen and tighten discipline; improve the effectiveness and efficiency; concentrate on developing and raising human resource quality; significantly improve material, cultural and spiritual life for people; maintain political security, social safety and order; strengthen capacity of natural disaster prevention, actively adapt to climate changes, protect the ecological environment.

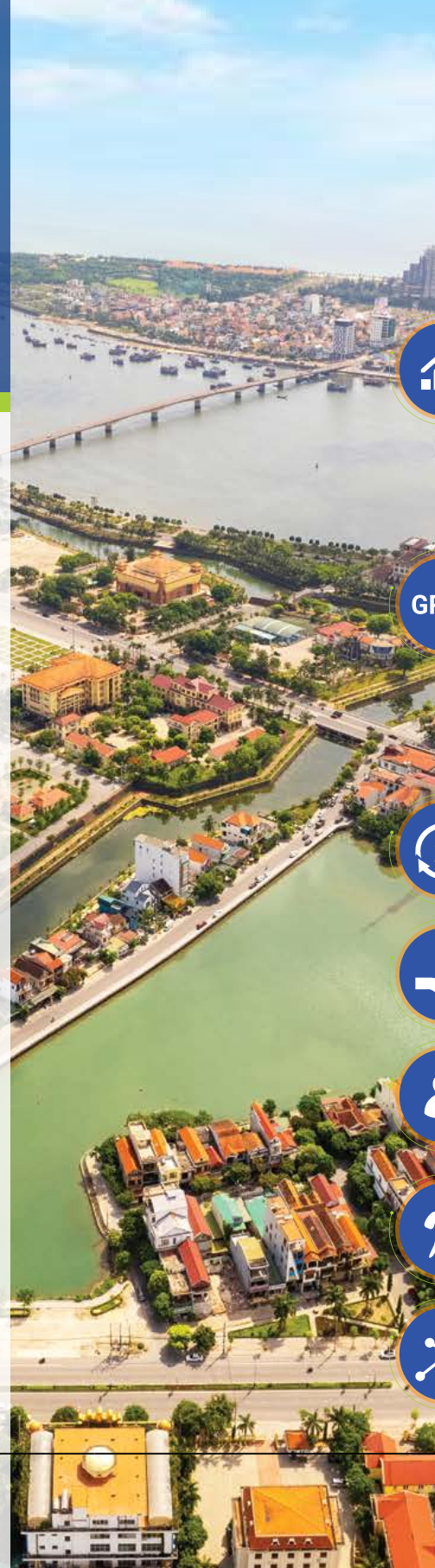


By the year 2030, strive to enable Quang Binh to become a fairly developed province of the Central region.

### VISION BY THE YEAR

# 2050

Quang Binh will be a dynamically developing economy of the Central region and the whole nation, which will be the important connecting point within the North-South, East-West economic crossroads (sea-oriented); on effectively promoting potentials, advantages, especially the outstanding and unique universal values of the World Natural Heritage - Phong Nha Ke Bang National Park, Quang Binh will be positioned as the leading tourist attraction in the Southeast Asian region with magnificent cave system, diversified ecosystem, plentiful cultural values, high-ranking rehabilitation and recreational sports center enclosed with community benefits and sustainable tourism development.



## DETAILED ECONOMIC OBJECTIVES BY THE YEAR

# 2030

### Average GRDP growth rate

within **8.4 - 8.8%**/year

### Economic sectoral structure in GRDP

- Industry - construction sectors account for about 38.0 - 38.5%;
- Services sector accounts for about 45.0 - 45.5%
- Forestry, agriculture and aquaculture sectors account for about 12.5 - 13.0;
- Product tax minus subsidies accounts for about 3.5 - 4.0%.



### Total social invested capital for the whole period

reaches about **VND 375 - 425** trillion



### Budget revenue reaches about **VND 13** trillion



### GRDP per capita

reaches about **VND 145 - 150** million



### Total number of tourists to Quang Binh

about **10** million visitors



### Digital economic density in GRDP accounts for **25 %**



## PROVINCIAL DEVELOPMENT PRIORITIES

### 02 CENTERS OF GROWTH DRIVERS



**PHONG NHA - KE BANG NATIONAL TOURISM CENTER**  
Becomes the classy tourism center of the Southeast Asia



**HON LA ECONOMIC ZONE (EZ)**  
Becomes the motivating economic zone contributing to the economic growth.

### 03 URBAN CENTERS



Dong Hoi city urban center and its vicinity, out of which Dong Hoi city acts as the nucleus and satellite and gateway urbans connected with Dong Hoi city including Quan Hau, Hoan Lao (including expanded space), Viet Trung, Dinh Muoi

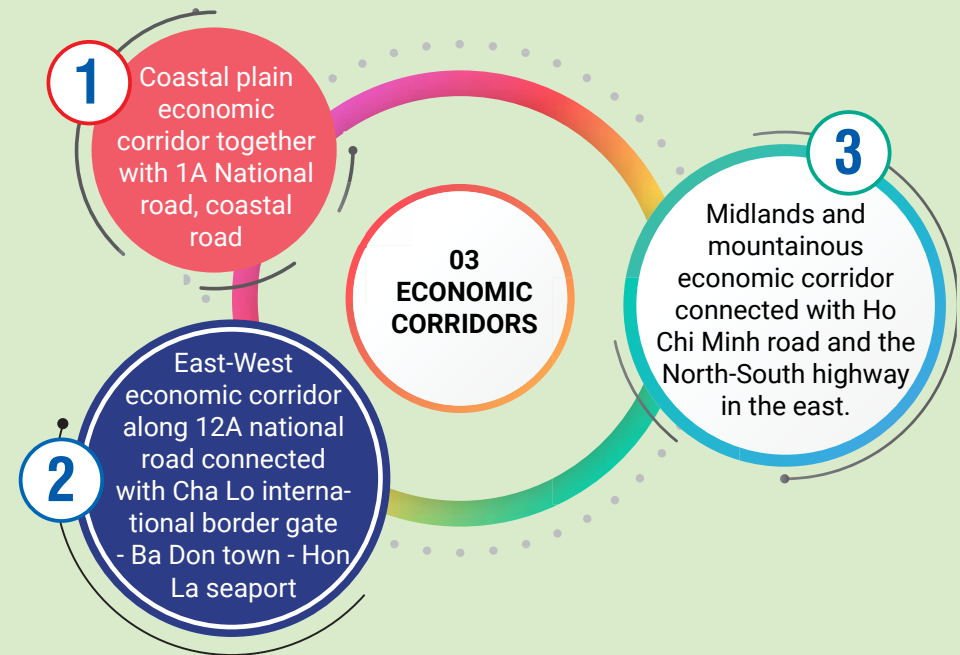


Northern urban center with Ba Don town as the nucleus connected with Quang Trach district, Hon La economic zone, Tien Hoa commune;



Southern urban center with Kien Giang town as nucleus (city town in the near future), satellite urban centers including Le Ninh and Ang Son

### 03 ECONOMIC CORRIDORS



### 04 PILLARS OF ECONOMIC DEVELOPMENT

- 1 Focus on **TOURISM** development investment to become the key economic sector, affirm the brand name of Quang Binh tourism on the international tourism map; consider this as the breakthrough for economic growth and restructuring;
- 2 **INDUSTRY** development considered as the focal point, focusing on encouraging, calling for industries development of electricity production, renewable energy, processing and manufacturing;
- 3 High-tech **AGRICULTURE** development oriented to commodity production with highly added values, prioritized for high-tech application, considered as the pedestal for the provincial economy;
- 4 Effective and sustainable **MARINE ECONOMY** development enclosed with guaranteeing national defense, security, the sea and island sovereignty protection.

# INVESTMENT ATTRACTION ORIENTATION

## AREA OF GROWTH DRIVERS PHONG NHA - KE BANG NATIONAL PARK AND ITS VICINITY

**World class ecological resorts tourism centers,** combined with healthcare services, experience tourism connected with forest ecosystem and distinctive, spectacular natural landscapes in Phong Nha - Ke Bang National Park (*prioritizing tourism centers possessing distinctive architecture with the typicality of Phong Nha - Ke Bang region, modern technological application, climate changes adapting including resorts, retreat, ecolodge....*)



**Products of caves visit and exploration:** exploit potentials, geological and geomorphological values of Phong Nha - Ke Bang National Park (*mass product of cave visit organized at the administrative – services and buffer zones; the product of cave exploration and adventure as per limited groups at the ecological recovery and strict protection zones....*)

**Above-approached products of Phong Nha - Ke Bang discovery and experience** by suitable means of transport, guaranteeing the suitable factors and natural resource conservation to exploit the potentials of highly valued biological diversification together with endemic, rare flora and fauna as well as the outstanding, spectacular sceneries of the national park.



**Experience tourism products combined with scientific research, environmental interpretation** so as to exploit the potentials of the endemic forest ecosystem, protection forest, majestic natural landscape and the achievements of existing rare and precious animal species rescue and conservation (flora garden, wild animals rescue zone, biodiversity park...)

**Theme parks** promote the advantages of adventure tourism with outdoor experience activities such as: adventurous sport, activities of recreation, entertainment...; the house-on-tree model and the typical public space design in Phong Nha; develop the international standardized cycling tour within the region of the national park....

**Projects of developing high quality recreation, entertainment, resort tourism products and services;** organize eco-tourism products of natural experience, native culture in the advantageous areas belonging to the vicinity of Phong Nha urban center.

## INDUSTRIAL DEVELOPMENT AREAS (ECONOMIC ZONES, INDUSTRIAL PARKS, INDUSTRIAL CLUSTERS)

❖ **Investment and development of industrial parks (IP) infrastructure** within the province as per the master plan (*The western gateway IP - Quang Trach district, Quang Trach IP - Quang Trach district, Bo Trach IP - Bo Trach district, Bang IP - Le Thuy district...*)

❖ **Investment and development of industrial clusters (IC) infrastructure** within the province as per the master plan (*Hoa Tien industrial cluster - Minh Hoa district; Tuyen Hoa centre IC - Tuyen Hoa district, Quang Tho IC - Ba Don town, Quang Trach centre IC - Quang Trach district, Nam Trach IC - Bo Trach district, Dong Son IC - Dong Hoi city, Hai Ninh IC - Quang Ninh district, Sen Thuy IC - Le Thuy district...*)



❖ **The provincial northern industrial region** with the following nucleus: *Hon La economic zone, the following industrial parks: Hon La seaport, Hon La II, Western gateway, Quang Trach and ICs within the region:* prioritizing for high-tech qualification and eco-friendly projects such as: mechanical industry, electronics and informatics, spare parts assembly, seafood processing, salt production, power generation and distribution, construction materials production...and supporting industries for Vung Ang economic zone (Ha Tinh).



❖ **The provincial centre industrial region** including the following industrial parks: *Bo Trach, North Dong Hoi, Northwest Dong Hoi, Northwest Quan Hau and other ICs in the region:* prioritizing for clean and eco-friendly industries, attracting consuming products industries using many labors, high technology, clothing industry, leather shoes manufacturing, timber deep processing, seafood export, high quality cattle and poultry meat processing....

❖ **The Southern industrial region** including the following industrial parks: *Cam Lien, Bang and other ICs within the region:* prioritizing in attracting industries of timber deep processing, seafood export; high quality cattle and poultry meat processing; construction materials production, stone exploitation.....

❖ **The main construction material production zone** in the districts of Tuyen Hoa, Quang Ninh: Construction material production industry development including: cement, clinker, industrial lime, high quality calcium carbonate powder....

❖ **Logistics and commercial services centers** in Hon La economic zone, Cha Lo border gate economic zone.



## URBAN AREAS



Investment attraction for technical and social infrastructure construction, new urban centers at 16 urban areas planned by 2030, as follows:

| NO.                                   | NAME OF URBAN AREAS                         | URBAN TYPE |
|---------------------------------------|---|------------|
| <b>EXISTING URBAN AREA</b>            |   |            |
| 1                                     | Dong Hoi city                               | II         |
| 2                                     | Ba Don town                                 | III        |
| 3                                     | Expanded Hoan Lao town                      | IV         |
| 4                                     | Expanded Kien Giang town                    | IV         |
| 5                                     | Dong Le town                                | V          |
| 6                                     | Phong Nha town                              | V          |
| 7                                     | Quan Hau town                               | V          |
| 8                                     | Quy Dat town                                | V          |
| 9                                     | Viet Trung Farm town                        | V          |
| 10                                    | Le Ninh Farm town                           | V          |
| <b>NEWLY CONSTRUCTED URBAN CENTER</b> |   |            |
| 11                                    | Dinh Muoi (Quang Ninh district)             | V          |
| 12                                    | Phuc Trach (Bo Trach district) <sup>1</sup> | V          |
| 13                                    | Hon La (Quang Trach district) <sup>2</sup>  | V          |
| 14                                    | Quang Phuong (Quang Trach district)         | V          |
| 15                                    | Cha Lo (Minh Hoa district) <sup>3</sup>     | V          |
| 16                                    | Tien Hoa (Tuyen Hoa commune)                | V          |

<sup>1</sup> Belonging to Phong Nha – Ke Bang national park and its vicinity  
<sup>2</sup> Belonging to Hon La Economic zone  
<sup>3</sup> Belonging to Cha Lo border gate economic zone

## COASTAL, PLAINS REGION



Deluxe sport, entertainment, resort tourism complex; resort real estate combined with coastal golf courses (*Ba Don, Bo Trach, Quang Ninh, Le Thuy....*)



Development of the sea-island-riverside tourism products; night-time tourism products and services; sustainable tourism activities in the sandy strip along the coastline...



Natural discoveries ecotourism centers (*Hac Hai lagoon area - Quang Ninh district...*); river ecotourism products (*along Nhat Le river - Long Dai river - Than Dinh mountain; Kien Giang - An Ma connected with Marquis Nguyen Huu Canh tomb area - Le Thuy district; along Long Dai river, Tam Lu waterfall crossing experience - Quang Ninh district; along Gianh river combined with visiting langur herds on the limestone mountain in Tuyen Hoa district...*);



Investment in coastal aquaculture (*Quang Trach district...*); concentrated organic aquaculture (*Le Thuy district...*)



Concentrated high-tech applied agricultural zone combined with the supply chain of agricultural products and commodities (*Northwest Dong Hoi or Southwest Bo Trach*)



Projects of high-tech applied agriculture and organic agriculture development (*Bo Trach district, Le Thuy district...*); projects of organic rice producing and processing (*Le Thuy district, Quang Ninh district...*)



Investment to form the concentrated production areas, specialized farming production areas combined with the models of cultivation, animal husbandry, aquaculture as per good agricultural production process; focused animal husbandry combined with grass plantation; large fields area expansion regarding marketable crops with climate changes adaptation.

## MIDLAND AND MOUNTAINOUS REGION

Ecological, adventurous, natural discoveries tourism centers (*Cha Cung waterfall, Than Dinh mountain, Rao Da lake - Quang Ninh district; the areas of Van Trach commune, Tay Trach commune - Bo Trach district; the area of Yen Phu lake, Ruc Mon cave - Minh Hoa district...*)

Projects of cultural-historical-ecological tourism centers (*The area of But waterfall, resistance war capital of Emperor Ham Nghi historical relic, Khe Thui historical relic, Minh Hoa district...*)

Projects of resort tourism, healthcare services (*Ngu Hoa hot spring area - Tuyen Hoa district...*)

Investment and development of high quality poultry and cattle farming enclosed with concentrated processing factory (*districts: Bo Trach, Le Thuy, Tuyen Hoa, Minh Hoa...*)

Medicinal plants plantation under the forest canopy combined with community - based eco-tourism development (*Districts: Bo Trach, Le Thuy, Quang Ninh...*)

High tech applied organic medicinal mushroom, edible mushroom, medicine production (*districts: Bo Trach, Tuyen Hoa, Minh Hoa...*); high tech applied organic fruit trees (*districts: Le Thuy, Bo Trach, Tuyen Hoa...*)

Investment and development of agro-forestry model, economic forest and indigenous trees plantation for timber with high economic value, non-timber forest products, medicinal plants and animal husbandry under the canopy; planting large timber forest, building material timber areas; development of crops adapting to climate changes (*such as water melon, lemongrass, husbandry grass, myrtle, forestry tree, industrial plants, fruit trees, medicinal plants, raw cassava...*)



# COMMITMENTS OF QUANG BINH PROVINCIAL LEADERSHIP

To strengthen the quality of business investment environment and make Quang Binh closer to investors with the principle *"the development and success of the investors and enterprises is also the success of the province"*, the provincial leaders hereby commit as follows:

1

"Accompanying enterprises", "serving enterprises" are the operational guidelines of all levels, sectors.

2

Minimize the time and cost for administrative procedures implementation (*business registration, investment registration, land, construction, customs, tax...*)

3

Reduce times of inspection, examination, monitoring.

4

Apply the maximum preferential treatments of tax, costs, land use fees and other supports for investment projects as per legal stipulations.

5

Publicly and transparently provide information of land, master plan, plan, the list of projects calling for investment...

6

Guarantee sufficient supply with high quality electricity, clean water, telecommunication... for projects of investment, trading and production.

7

Support for recruitment, labor training for newly invested projects or projects of restructuring or business model transformation.

8

Commit to guarantee security order, social safety out of the fences of enterprises, factories.

9

Protect the legal rights and benefits of enterprises; not criminalizing economic and civil relationship.

10

Establish the mechanism of supporting enterprises; strengthen dialogues with enterprises; establish the information channels to provincial leaders.